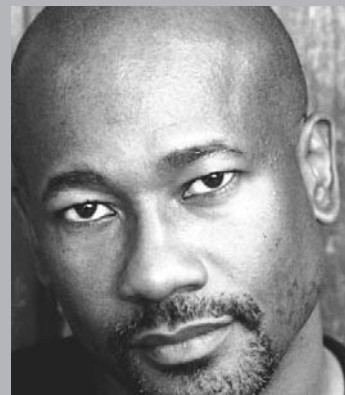


CAVE CANEM SOUTH

Cave Canem Foundation / South Carolina Poetry Initiative

POETRY WORKSHOP

February 5 - 7, 2010



KWAME DAWES

Artistic Director

NIKKY FINNEY

Workshop Leader

PATRICIA SMITH

Workshop Leader

FRANK X WALKER

Workshop Leader

Columbia Museum of Art

1515 Main Street, Columbia, South Carolina 29201
803.799.2810 / www.columbiamuseum.org

Friday, February 5

6:30 - 7 pm	Welcome & Reception
7 - 8 pm	Welcome Circle
8 - 9 pm	Talks on Craft

Saturday, February 6

8:30 - 9 am	Coffee, Snacks & Fruit
9 - 11 am	Workshop One*
11:30 am - 1:30 pm	Workshop Two*
1:30 - 2:30 pm	Lunch
2:30 - 4:30 pm	Workshop Three*
4:30 - 5:30 pm	Gathering

*Participants study with all three workshop leaders.

Sunday, February 7

2 - 3 pm	Ekphrasis Workshop with Kwame Dawes
3 - 4 pm	One-on-One Sessions
4 - 5 pm	Participants Reading

February 6 / 7-9 pm

Gressette Room, Harper College, University of SC
FEATURE READING
Prize-winning poets Nikky Finney,
Patricia Smith & Frank X Walker

Free & open to the public

This 3-day workshop led by world-class poets is open to **adult African American poets** living in the southeastern United States.

Participants must attend all three days. For guidelines and forms, contact Dr. Charlene Spearen at cmspeare@mailbox.sc.edu or 803.777.0307, or go to www.sc.edu/poetry.

Deadline to register: Applications must be received by **January 30, 2010**.

Registration fee: \$30.

Requests for need-based scholarships must be received by **January 25, 2010**.

Founded in 1996 to remedy the under-representation of African American poets in MFA programs and writing workshops, Cave Canem is a home for the many voices of African American poetry and is committed to cultivating the artistic and professional growth of African American poets.

The South Carolina Poetry Initiative is a center for the promotion, celebration and production of poetry based at the University of South Carolina. To accomplish its goals, the Poetry Initiative has established partnerships with a wide cross section of arts organizations and private and public sector organizations.

www.sc.edu/poetry / SOUTH CAROLINA POETRY INITIATIVE

www.cavecanempoets.org / A HOME FOR BLACK POETRY



LEAD FUNDING: UNIVERSITY OF SOUTH CAROLINA. **ADDITIONAL FUNDING:** FORD FOUNDATION, LANNAN FOUNDATION & MANY INDIVIDUALS. **SPECIAL THANKS TO:** COLUMBIA MUSEUM OF ART.